



modulex

RESIDENTIAL
MIXED USE.

Visual Communication Solutions for
Residential and Mixed-Use Environments.

GLOBAL VISION • LOCAL REACH • ONE COMPANY



Mixed-use developments and urban living spaces are on the rise. These environments have significant foot traffic with visitors, customers and residents alike. Each of these user groups requires something different from their user experience. The goal is to provide a quick and efficient means of navigating these spaces, considering accessibility, ensuring compliance without giving up aesthetic.



Stunning design with clear, concise messaging can work together, add value to users and visually enhance the environment. Modulex can design, consult and produce interior/exterior branded and wayfinding signage for a residential or mixed-use project. We have been doing it successfully for decades.



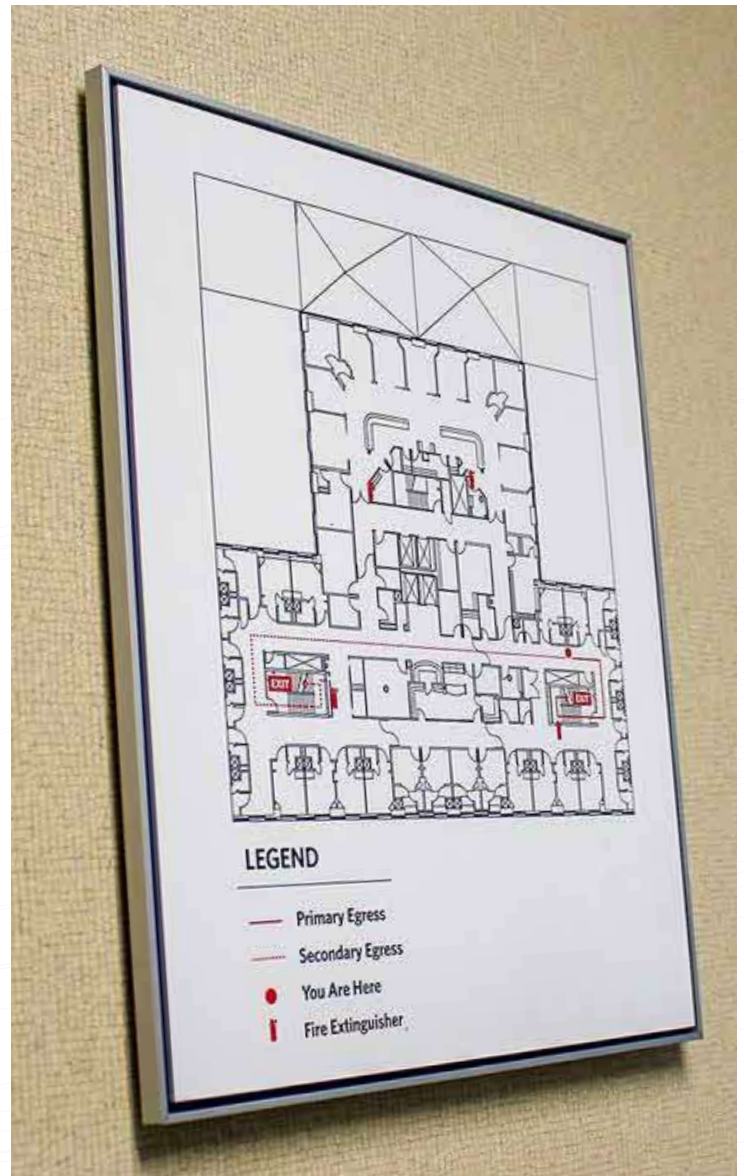


Our visual communication solutions range from signature modular signage families to custom options for a more bespoke brand expression. Our products include the very best in tactile and braille solutions to ensure guest satisfaction and compliance.



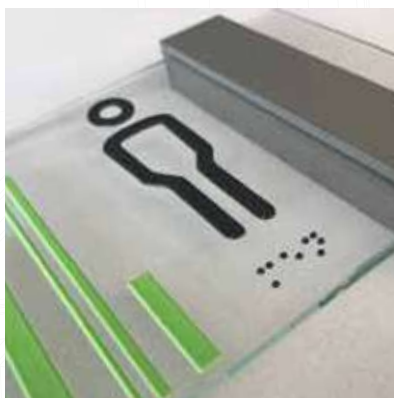
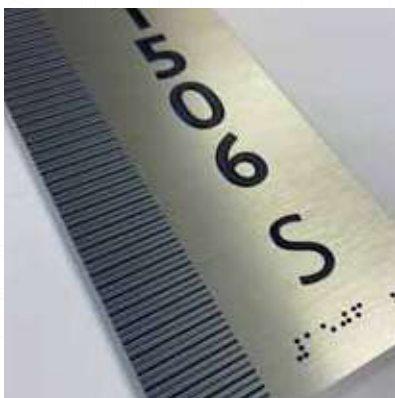


Wayfinding is the name given to the "art and science" that allow us to put the correct information in the right place at the right time to provide the user with an effortless journey through a possibly tricky environment.





Our several decades of wayfinding expertise will help you navigate your project. We will help you ensure your visitors, customers and residents experience will be compliant and stress-free.





The Modulex advantage is our ability to offer end-to-end project management. You dream it, we design, build and install it!





Connect with us!



Website
modulex.com



Facebook
Modulex A/S



LinkedIn
modulex



Twitter
@modulexsigns



Youtube
Modulex A/S



Email
marketing@modulex.com

